

OPEN OUT



Multi-point outward opening and closing mechanism in a single movement

- Safety thanks to the limited opening and to the fact that the arms can be released by authorised personnel only
- Applicable on both top hung windows and on leaf opening
- Version available for Euro-groove profiles
- Allows the installation of a fixed insect screen on the inside of the frame
- Can be used in conjunction with both hinges and with frictioning arms
- Simple and easy installation



Art. 1208

- Allows you to open or close the leaf by controlling all accessories with a single movement
 - Non-handed
- Practical and ergonomic handle
 - Ample 63 mm travel
- Adhesive gasket that, in case of water seepage from the outside in top hung windows, prevents water from seeping into the room


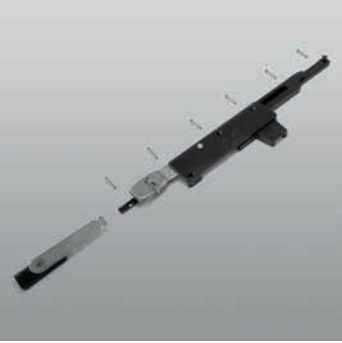





Art. 1208.1R (Art. 1208.1L)

- Can also be adapted to very narrow profiles
 - Rh or LH mechanism
 - 4" opening (100 mm)
- Can be combined with frictioning arms and hinges
- Possibility to obtain a multi-point closing along the perimeter

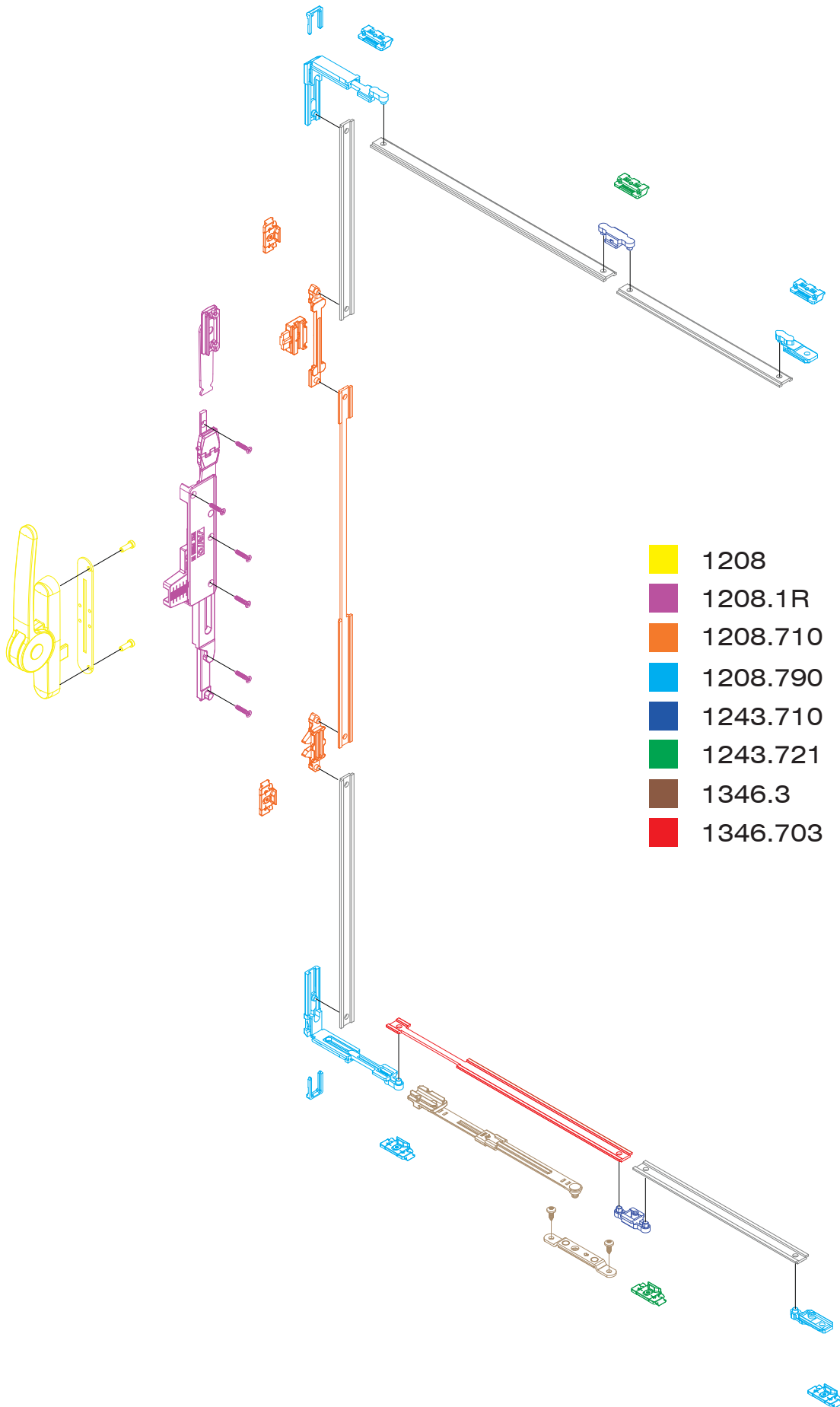
OUR ACCESSORIES ARE CONFIGURED SO AS TO BE USED ON MANY DIFFERENT PROFILES. THIS WAY, OUR CUSTOMERS CAN SUBJECT THE ENTIRE SYSTEM TO THE STRICT TESTS REQUIRED BY U.S. REGULATIONS (ADA TESTS).

OPEN OUT

	Art. 1208	Description Varnished zamak lever handle, 1 adhesive rubber gasket, 2 screws TORX® M5x14 in stainless steel.	Pcs. 5	Finishes 9005, 9010, BR5, SILV
	Art. 1208.1R 1208.1L	Description (patented) RH Basic kit including: 1 sliding block kit in stainless steel and black galvanized zamak, 1 mouvement mechanism in stainless steel, black anodized aluminium and varnished zamak, 6 countersunk head screw TORX® (T15) 3,9x22 in stainless steel. Like art. 1208.1R but LH.	Pcs. 5 5	Finishes
	Art. 1208.701	Description Kit for 1 closing point including: 1 adjustable keeper in black galvanized zamak and pre-assembled TORX® screws in stainless steel.	Pcs. 40	Finishes
	Art. 1208.710	Description Kit for 2 closing points including: 1 connecting rod in mill-finished aluminium, 1 pinion, 1 locking piece, 2 adjustable keepers and 1 safety kit in black galvanized zamak. Pre-assembled TORX® screws in stainless steel.	Pcs. 10	Finishes
	Art. 1208.790	Description Drive and closing point kit complete with: 2 upper drives, 4 adjustable keepers in black galvanized zamak, 2 kit including 1 locking piece in black galvanized zamak and 1 frictioning cap in red nylon. Pre-assembled TORX® screws in stainless steel.	Pcs. 10	Finishes

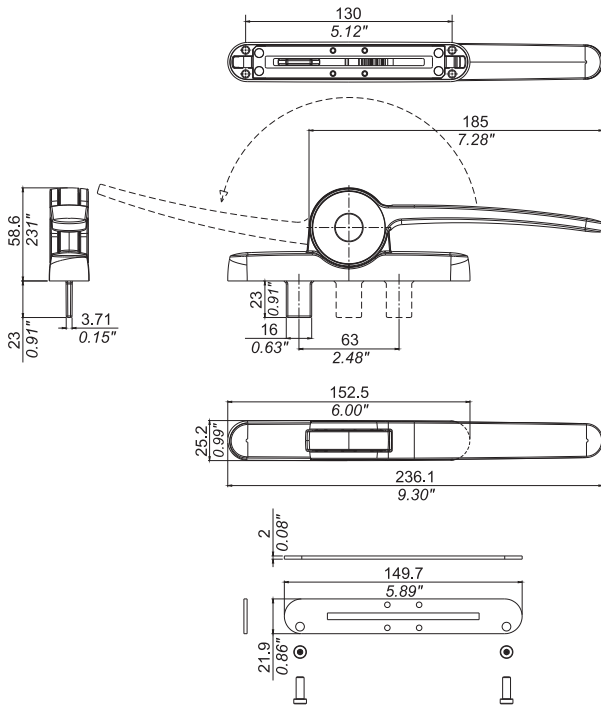
	<p>Art.</p> <p>1346.3</p>	<p>Description</p> <p>Opening restrictor arm stay in stainless steel and black galvanized zamak with arm key in nickel plated zamak.</p>	<p>Pcs.</p> <p>10</p>	<p>Finishes</p>
	<p>Art.</p> <p>1346.703</p>	<p>Description</p> <p>Arm rod in mill-finished aluminium.</p>	<p>Pcs.</p> <p>10</p>	<p>Finishes</p>
	<p>Art.</p> <p>1208.950R</p> <p>1208.950L</p>	<p>Description</p> <p>RH drilling jig in mill finished aluminium, bushings, pins and TORX® grub-screws pre-assembled in stainless steel.</p> <p>Like art. 1208.950R but LH.</p>	<p>Pcs.</p> <p>5</p> <p>5</p>	<p>Finishes</p>
	<p>Art.</p> <p>1208.951</p>	<p>Description</p> <p>Mounting jig in black nylon.</p>	<p>Pcs.</p> <p>5</p>	<p>Finishes</p>

Diagram of complementary accessories for perimeter closures

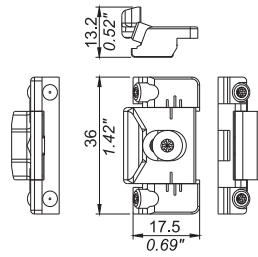


Open out

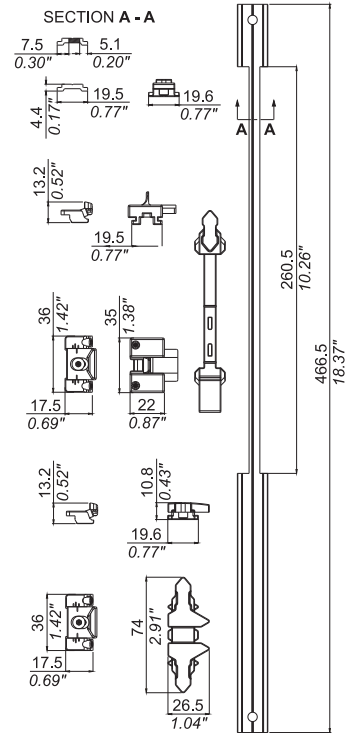
1208



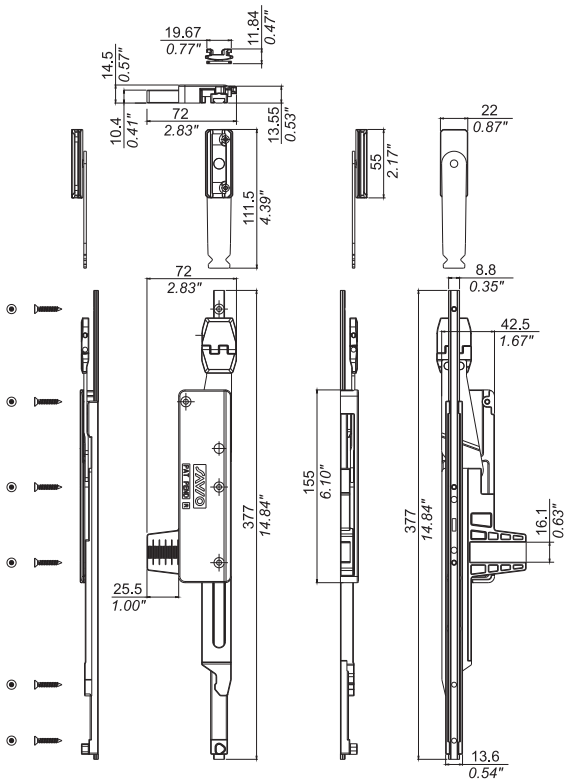
1208.701



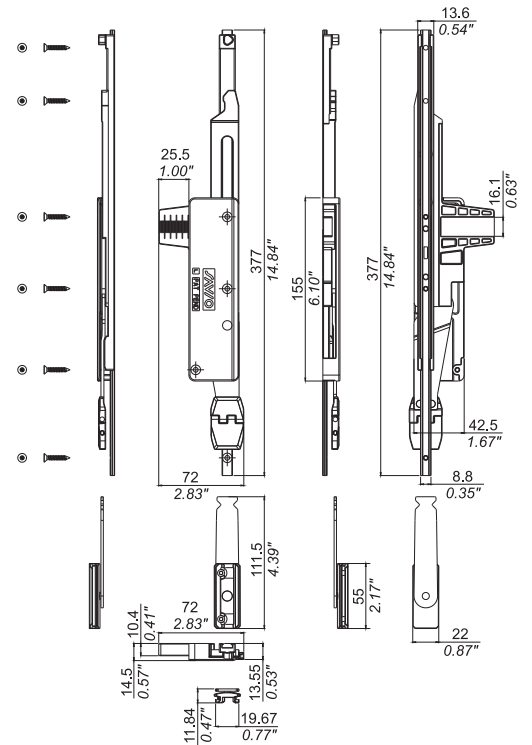
1208.710



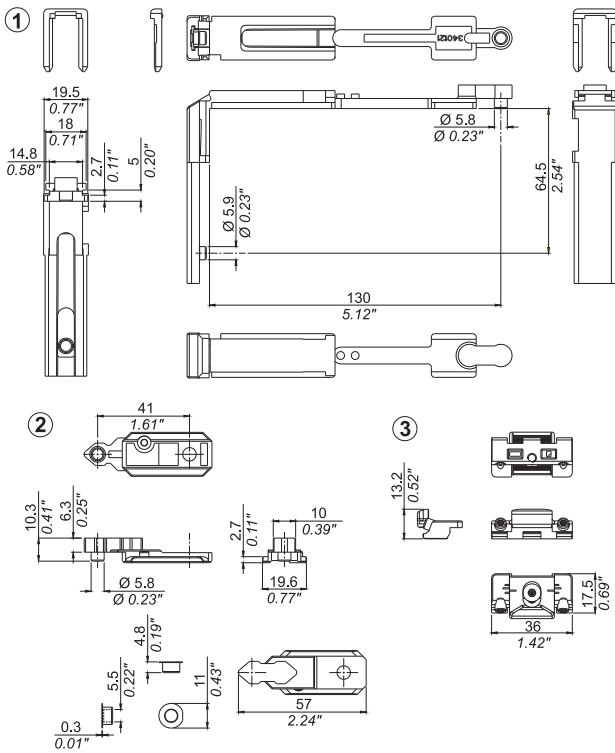
1208.1R



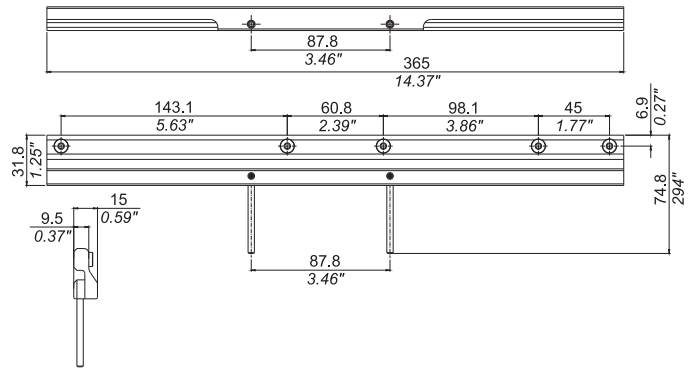
1208.1L



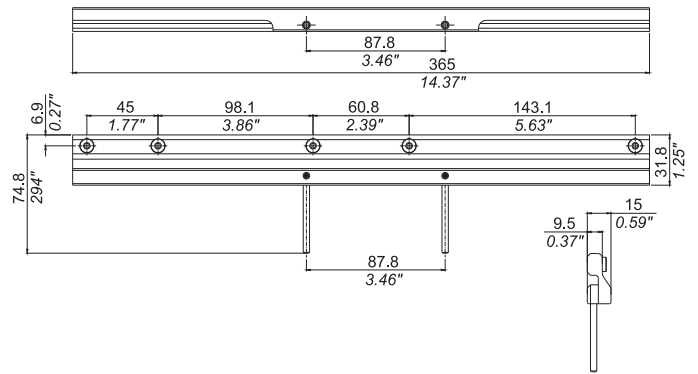
1208.790



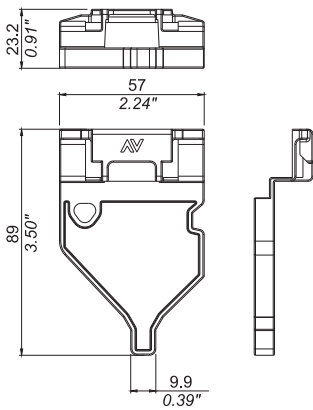
1208.950R



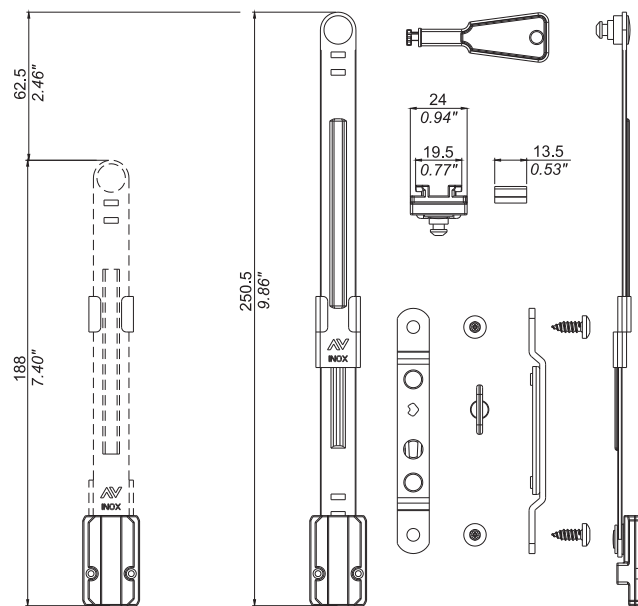
1208.950L



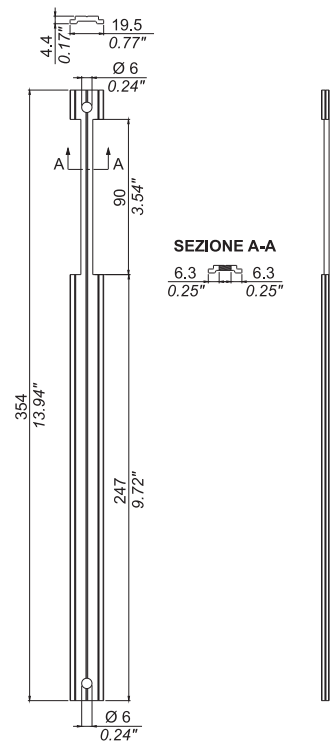
1208.951



1346.3



1346.703





Savio S.p.A.
Via Torino, 25 (S.S. 25) - 10050 Chiusa S. Michele (TO)
Tel. +39 011 964 34 64 - Fax +39 011 964 34 74
www.savio.it - export@savio.it

